



# NORTH WARWICKSHIRE & HINCKLEY WOODTURNING CLUB

## Newsletter August 2024



**LOTTERY FUNDED**



Find us on 

[www.hinckleywoodturners.org.uk](http://www.hinckleywoodturners.org.uk)

## Notes From The Editor

Inside you will find my report on the Pewter demonstration by Paul Hannaby. Some of us had seen it before but we have new members who have never seen Pewter being used.



You can also see my report on the demonstration by club member Bob Smith. Bob turned a square bowl that won third place at the Woodworks at Daventry show earlier this year. By popular demand, he was asked to turn another one as a demonstration. In addition, he turned a simple segmented piece inspired by the late John Bradbury.

I attended Chestnut's Woodturning Weekender on Sat/Sun 10/11th August, in Spalding, Lincolnshire. Four half-day demonstrations over two days by Chris Parker (aka the Bald Turner), Andrew Hall (aka the Hat Man), Mary Ashton & Gary Rance. A few pictures can be found inside.

Our next demonstration is on September 3rd, when new club member Chris Grimshaw will show us what a newcomer to turning can do. Still keen to try his hand at anything, Chris has improved considerably since his first efforts at turning.

There is some doubt as to whether we will have the Hands-On sharpening session on September 17th due to a key club member being away on that day. If we can't hold it on that day, it will be re-arranged and we will let you know the new date. We will hold a normal Hands-On session in its place.

Club members send their condolences to Chairman John Evans who lost his wife Pat at the start of the month.

Rob Sheehan

Secretary, Newsletter Editor & Web Site Manager

## Pewter Demonstration by Paul Hannaby 6/8/2024

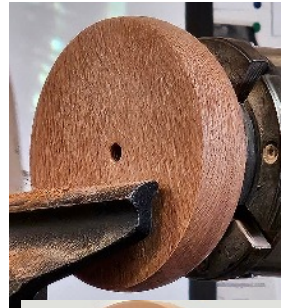
Paul gets his casting pewter (alloy of tin, antimony & copper) from The Pewter Sheet Company. It costs about £25 for a 1kg ingot plus postage. One ingot should make about five pewter rings. Pewter shavings can be gathered, put back into the melting pot and used again.



Lee Production Pot Mark IV. Cost about £100. Designed for melting lead for bullets but melts pewter easily. Spout at the bottom enables pewter to be poured directly into the mold. Close grained timbers are best for molds as open grained timber contains air pockets that can cause bubbles in the pewter. Paul uses MDF.

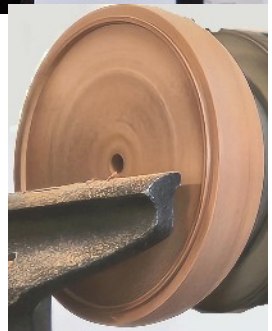


Bowl blank turned and held in chuck. Rim area must be flat across the whole width so no gaps appear when the pewter ring is added.



Left - modified scraper with 2mm slot for creating the tenon on the rim.

Right - Tenon cut on rim to provide mechanical hold for pewter ring rather than just relying on epoxy resin.



Ring of pewter still in the mold. Mold mounted on the lathe, ready for turning. Pewter shrinks as it cools so it grips the inside edge of the mould. This is sufficient to hold the pewter while it is turned.

Ordinary lathe tools are used to turn pewter.

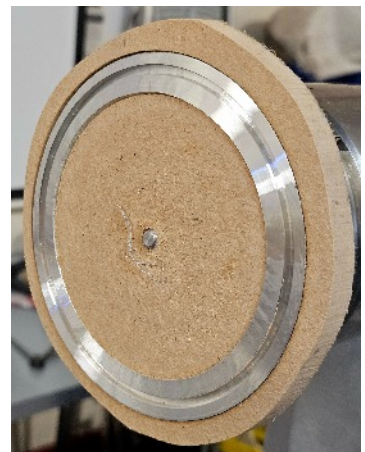


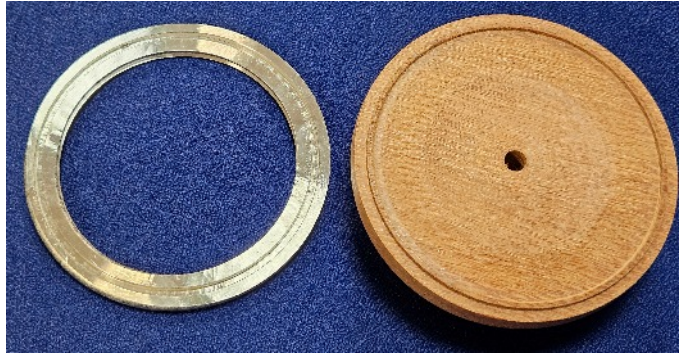
Paul first used a round-nosed scraper to smooth the roughness on the surface of the pewter. He then switched to a square-ended scraper to flatten the face. He checked with a ruler to make sure the face was flat all the way accross. Any tapering and a gap will appear when the rim is fitted onto the bowl.



Mortice/recess cut in the pewter to fit over the tenon cut into the rim of the bowl. Paul used a 2mm narrow parting tool. Its width matched the slot cut in the scraper used to cut the tenon earlier.

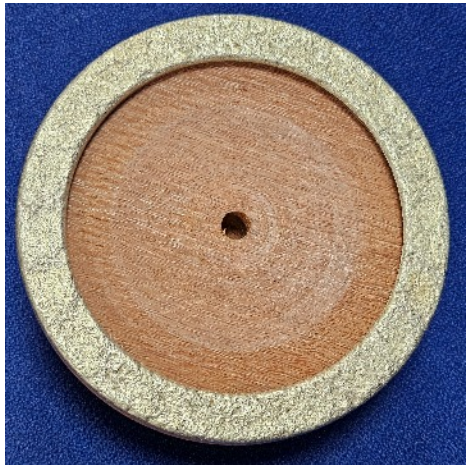
To release the pewter ring, Paul cut the full 8mm depth on the outside of the ring and 3mm depth on the inside. He then used a flat-bladed screwdriver to prise it free.





Above - the pewter ring and bowl blank ready for glue up.

Right - Pewter ring glued to the bowl blank with Araldite (an epoxy resin). Paul leaves it 24 hours before turning. He prefers to use epoxy resin as superglue can fail over time.



Turning the pewter rim to match the shape of the bowl.





Turning complete. Paul sanded the bowl from 180 grit to 400 grit. With each grit, the wood is sanded first, followed by the pewter. Running the abrasive from the pewter to the wood blackens the wood.



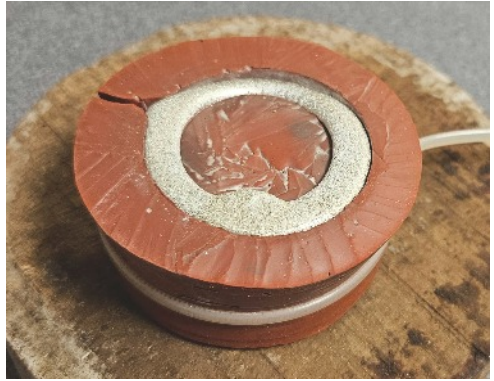
The finished bowl. Paul sprayed sanding sealer inside and out followed by 0000 wire wool on the pewter to remove the sanding sealer. He then polished the pewter with metal polish before waxing both the wood and the pewter.



Paul also cast a pewter foot for the bowl. Unfortunately, he ran out of time before he could fit it properly and remove the chucking spigot.



Paul also makes threaded box inserts from pewter. This is a silicon mold to create one half of the threaded insert. He uses talcum powder to coat the mold as a release agent. These molds can be re-used unlike the MDF molds which can only be used once.



The two box inserts straight from the mold. They will be turned to clean up the glue faces and the threaded areas. Paul hand chases his threads.



An example of a threaded box using pewter inserts.



Another example of a threaded box using pewter inserts.





Above - Pewter discs that have been textured using standard woodturning texturing tools. Used as inserts on box lids for example.

Right - Pewter finial.





# Chestnut Woodturning Weekender

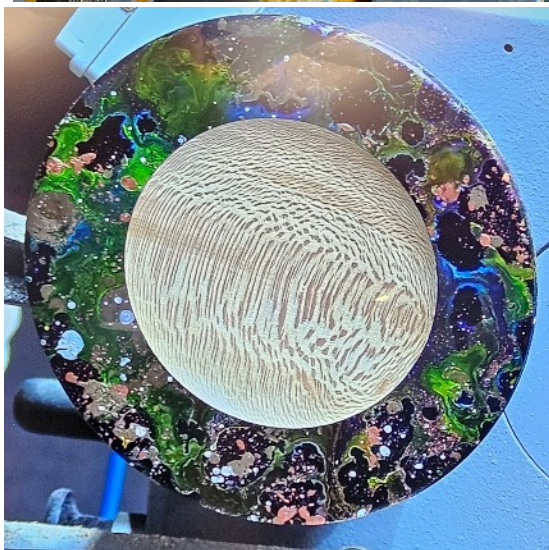
10th/11th August, Springfield Events Centre, Spalding, Lincolnshire

Four half-day demonstrations over the two days, with local clubs and traders touting their wares in between the demonstrations.



**Chris Parker** (aka The Bald turner) demonstrated off-centre turning using the Axminster Eccentric Chuck. He then airbrushed them using Chestnut spirit stains or coloured them using Chestnut rainbow waxes. Botom right shows a textured piece suitable for a box lid etc.





**Andrew Hall** (aka The Hat Man) produced some abstract art, for a bowl rim or on a canvas, by applying sploges of paint and then spinning it to spread the paint. He also produces blues guitars from a turned bowl.





**Mary Ashton** demonstrated a bowl with various sized wooden inserts in the rim. Bottom shows a piece she produced some time ago with a pierced rim.





**Gary Rance** turned a salt shaker in the form of a bell, a pepper mill in the shape of a chess piece and (not shown) an apple,









**Above** - AWGB stand

**Below** - Kirsty Dalton

**Below Right** - The Crazy Woodman (basket weave effect)



## Bob Smith Demonstration 20/8/2024

Club member Bob was asked to demonstrate turning a square bowl after he managed a very creditable 3rd place in the square bowl competition at Daventry this year. For a square bowl, Bob stressed how important it was to start off with an accurately cut square blank.



Starting with a 190mm square blank of Beech, held on a screw chuck, Bob turned a chuck recess, the foot and curved the bowl up to a line  $\frac{2}{3}$ ds the depth of the blank. He left a  $\frac{1}{4}$ " margin all around the bowl to the edge of the blank.



After sanding 180 grit to 400 grit, Bob sealed the bowl with cellulose sanding sealer, thinned 50/50. He then applied a coat of Friction Polish followed by a coat of Chestnut Woodwax 22. He prefers Microcrystalline as it provides a harder finish.



Bob's home-made sanding stick. Plastic stick with 4 velcro pads. Attach abrasive strips 180, 240, 320 & 400 grit. Keeps hands clear of fast rotating corners and provides a flat surface for hand sanding the rim.



After mounting the bowl by the recess in the base, Bob marked the thickness of the wings at about 4mm on the edge of the blank. This leaves room for the bowl to come through the rim. Another design would have the bowl flush to the rim.



Bob turned the rim to thickness before removing any timber from the centre of the bowl. This gave the most rigidity for the thin wings. He also said cuts should be light so as not to flex the wings as they are cut. The outside diameter of the bowl protruding through the rim, matches the outside diameter of the bowl turned earlier on the underside.





Bob decided to have a bead on top of the bowl. He cut this using a beading tool. He then hollowed the centre of the bowl.

Remember when checking the thickness, that there is a recess in the bottom.



The finished bowl. Sanded to 400 grit. Sanding sealer, Friction Polish and a coat of wax.



Bob's next project was a segmented Bud Vase made from a centre square core of Oak and four pieces of Sapele glued onto the outside. The PVA glue needs at least 24 hours to dry before turning.

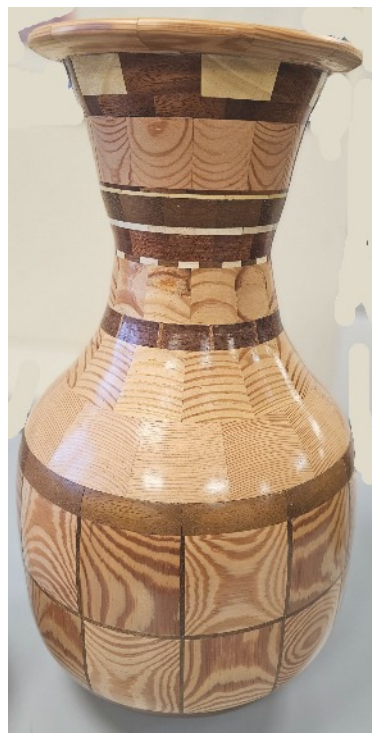


Bob drilled a 13.5mm hole to take a 12mm plastic tube. He then shaped the narrow neck and the ball-shaped body.



Above - sanded and polished, ready for parting off.

Left - the finished Bud Vase with plastic tube insert.



Members' work on display at Bob's demonstration.



# NORTH WARWICKSHIRE & HINCKLEY WOODTURNING CLUB EVENTS 2024

July	2nd	Hands-On	
	16th	Hands-On	
August	6th	Demo	Paul Hannaby
	20th	Demo	Bob Smith - Square Bowl
September	3rd	Demo	Chris Grimshaw
	17th	Sharpening Hands-On	
October	1st	Demo	Bob Smith - Hanging Vessel
	15th	AGM followed by Hands-On	
November	5th	Demo	Pat Byrne - Snail
	19th	Hands-On	(Stand design)
	22nd	Hinckley Christmas lights switch-on	
December	3rd	TBD	
	17th	Christmas Party	

## Events at Other Clubs

Please contact the club to check times/dates/locations before attending

Coombe Abbey  
 Saturday September 7th      demo by Steve Heeley  
 Walsgrave Baptist Church      10am - 4pm