



# NORTH WARWICKSHIRE & HINCKLEY WOODTURNING CLUB

## Newsletter December 2025



**LOTTERY FUNDED**



Find us on 

[www.hinckleywoodturners.org.uk](http://www.hinckleywoodturners.org.uk)

## Notes From The Editor

In this issue, you will find my report from professional turner Ian Ethel. During the evening, he turned an offset bud vase and a very thin platter. Note - Ian's attachment is Copyright (c) Ian Ethel. For personal use only. Do not share further.



I have also included pictures from the Christmas Party and competition results. There are also some Christmas jokes.

Last month, we also had a stall at the Barwell Christmas lights switch-on. This was a much smaller event than Hinckley, but we still raised £125 for the local Air Ambulance. Together with the £516 raised at Hinckley and the £1000 raised for the defibrillator this was a very good effort.

Our next meeting on Tuesday 6th January 2026. We will start with a Hands-on evening to gently break you into the new year.

I will be giving the demo on 20th January. I was planning an off-centre candlestick that I had seen done at Chestnut's Woodturning Weekender. However, my prototype didn't look as good as the one done by Simon Hope, so I may have a rethink.

Merry Christmas and a Happy New Year to all members.

Rob Sheehan

Secretary, Newsletter Editor & Web Site Manager

## **Ian Ethel 2/12/2025**

by Rob Sheehan

This was Ian's second visit to the club. Last time, he turned a 9-axis honey dipper. This time, he started with a 3-axis bud vase. Ian is a member of the Trent Valley Woodturning Club and a member of the RPT. Ian started with a 50mm x 50mm x 130mm Ash blank. Marking the diagonals to find the centre, Ian



also marked two offsets 12mm off centre at both ends. He then mounted it between two Steb centres from RDG tools, and turned chucking spigots at both ends.



The centre marking and the two 12mm offsets, done at both ends. Holding it in a chuck, Ian drilled a 13mm hole, 104mm deep. This stops short of the bottom.



Ian rounded over the top of the hole and sanded the hole. He then mounted the blank on offset centres #1.



Ian marked two (red) lines, leaving the bottom end (chuck end) just past the bottom of the drilled hole. He then cut between the lines.



The tail stock end was cut in a steep curve, the head stock end was cut at a gentle curve.



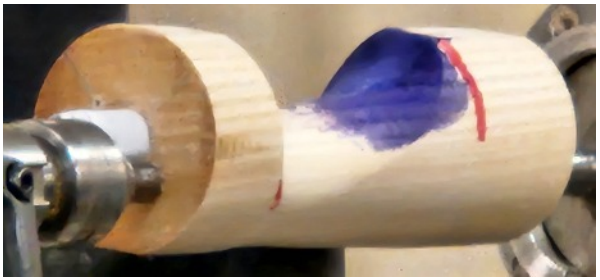
The cove was cut deeper until the drilled hole showed through the cove. Continue cutting deeper until the hole goes just past the centre line. Ian sanded the cove.



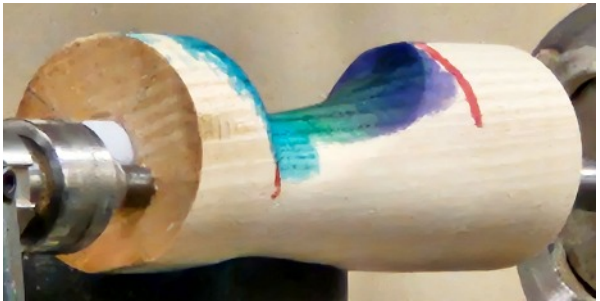
As Ian was going to airbrush the cove, he put a paper bung into the drilled hole, to prevent any spray from colouring the drilled hole.



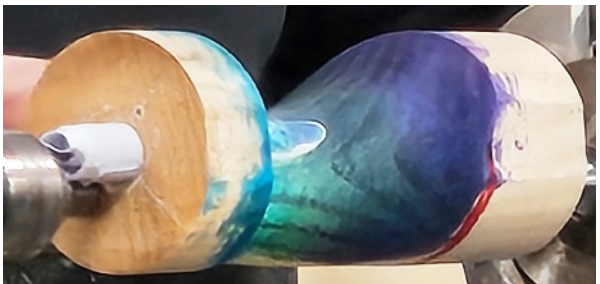
Ian started with a band of purple Chestnut spirit stain, covering about 1/3 of the cove at the head stock end.



The blue was followed by a band of green in the middle and a band of blue at the tail stock end.



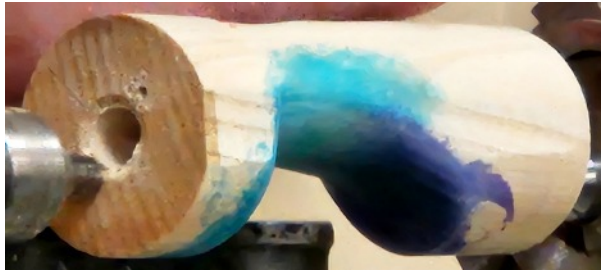
Another view of the three colours.



Ian then softened the colours by using a coat of liming wax. He then changed to offset centres #3 at both ends.



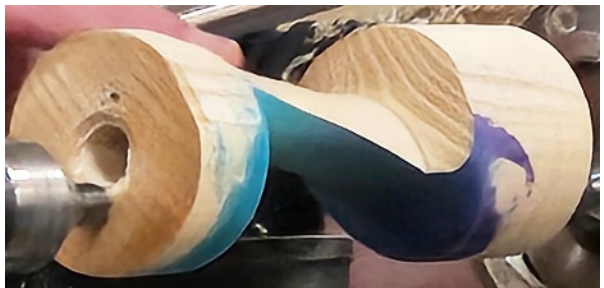
With the blank mounted on centres #3, Ian cut another cove on the other edge of the blank.



This time, he cut a shaper curve at the head stock end and a shallow curve at the tail stock end.



Again, the cove was cut deeper until the central hole appeared. The hole should go just past the centre line so there is a hole right through the centre at the mid point.



The second cove cut and sanded.



View showing the hole visible right through the blank at the mid point.



Ian rounded over the top, with the curve starting at the edge of the cove and curving down to the drilled hole.



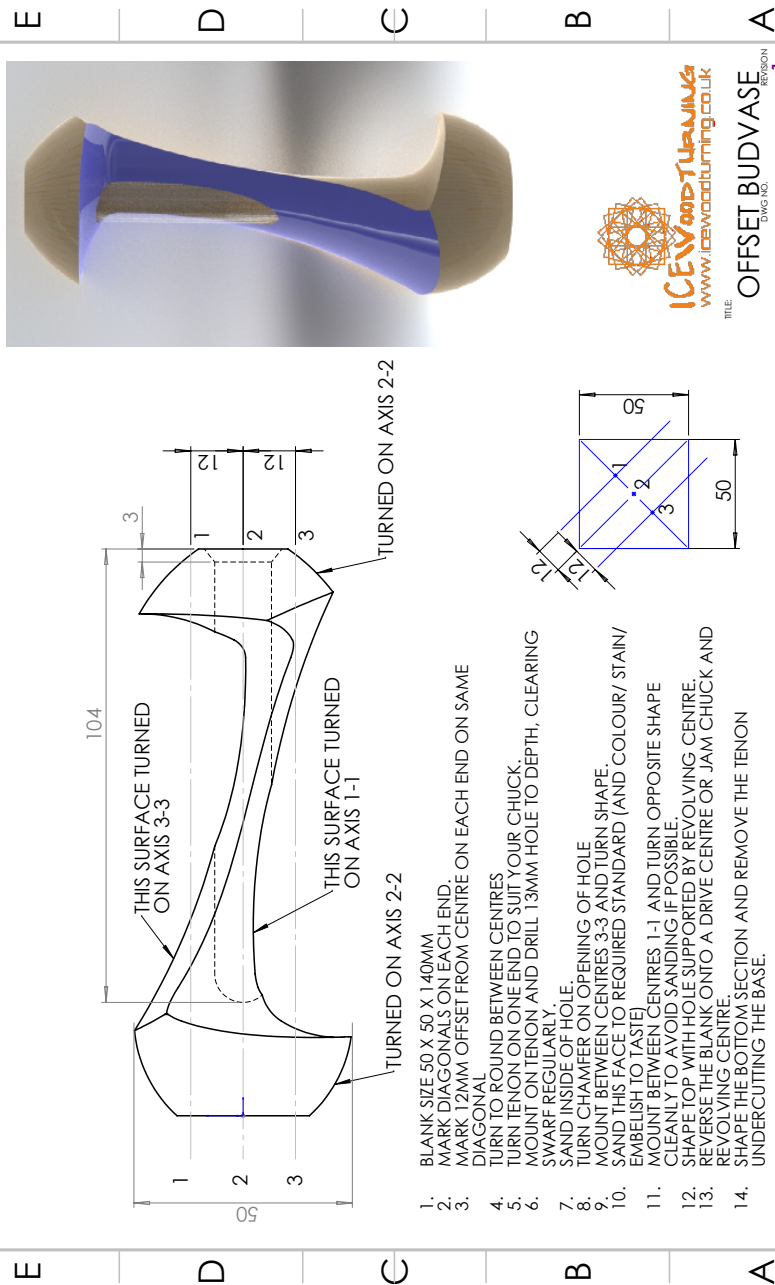
Ian then flipped the piece over so he could work on the base. He duplicated the shape at the base, making sure to under cut it. Ian decorated the base with the Henry Taylor Decorating Elf.



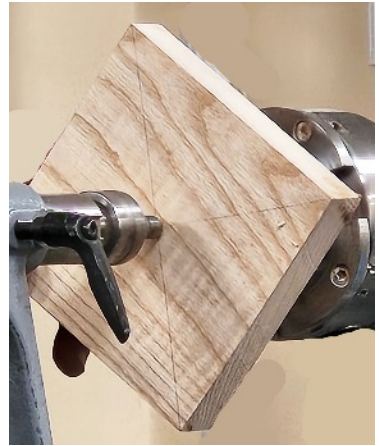


The finished  
Bud vase





Ian's second project was an ultra-thin platter, demonstrating the use of a shallow chucking spigot. He started with a 4" x 4" x 1" Ash blank, mounted between centres.



Ian cut a chucking spigot on the face, just to hold the piece while he got access to the underside.

Ian marked the size of the chucking recess. This must be accurately sized as it is going to be very shallow.



Ian cut the recess only 2mm deep. He then curved the bottom of the platter upwards towards the rim.

Mounting the piece on the shallow recess, Ian started shaping the top of the platter.



Ian only shaped 1/2" at a time. He only moved on when the thickness was an even 2mm.



Cutting another 1/2" to match the shape of the underside.



Testing the thickness by feel. Calipers could be used as well.

The platter cut to an even 2mm thickness, ready for sanding.



Ian's sanding glove.  
Abrasive is stuck to a golfing type glove.

Sanding by rubbing the abrasive fingers over the platter.  
Note - the sanding glove is currently unavailable.





The finished thin platter with very shallow chucking recess.



Ian's small step-type drive centre and live centre from RDG tools.



Ian's 40/40 gouge sharpening guide. Magnetic, it fits inside the flute & is used to align the tool to the grind stone.





**Some of Ian's work.**



**Some of Ian's work.**



## Members' Work



## Christmas Jokes

I got a universal remote control for Christmas.

That changes everything.

What do you call an old snowman?

Water.

Who does Santa call when his sleigh breaks down?

The Abominable Towman.

What's a reindeer's favourite singer?

Beyonsleigh.

How did Rudolf learn to play piano?

He was elf-taught.

What do you call a Yeti with a six-pack?

An abdominal snowman.

What nationality is Santa?

North Polish

What do you call Santa when he loses his underpants?

Saint Knicker-less.

What do you call a broke Santa?

Saint Nickel-less.

A snowball in your left and right hand, what do you have?

Frosty's full attention.

What's the difference between snowmen and snowwomen?

Snowballs.

Knock, knock. Who's there? Noah. Noah who?

Noah good Christmas joke?

What's green, prickly, and flies through the air?

A holly-copter.

Why is everyone thirsty at the North Pole?

No well.

What did Adam say on the day before Christmas?

"It's Christmas, Eve!"

How does Darth Vader know Santa is real?

He can always sense his presents.

What goes "Oh, Oh, Oh"?

Santa walking backward!

## Barwell Charity Stall

On a cold but dry evening at the Barwell Christmas lights switch-on event, we raised £125.11. Thanks to all club members who turned items or helped out on the stall.



## Christmas Party 2025

Another year gone. Good food, good turnout and good competition entries. A good way to end the year.



Many thanks to Bob Smith & wife Jane for catering the Christmas Party again this year.

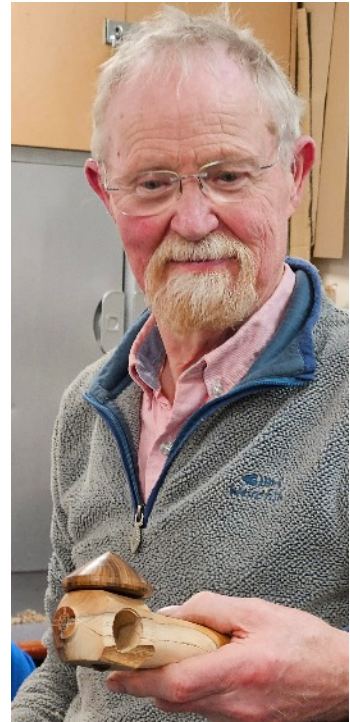


## Spinning Top Competition Winners

**Right:** Bill Bennett, winner of the string pull spinning top competition with a time of 4 minutes.

**Below Left:** Martin Randall, winner of the hand-spin spinning top competition.

**Below Right:** Paddy Byrne, winner of the all-in spinning top competition.





Above: Giles' entry. An automaton with puffins who turned their heads when the wheel on the right-hand side was turned.

Below: My entry. Ducks on a pond.





**Motor Control Warehouse** offers high-quality **inverters and motors** specifically designed for lathes, delivering performance, reliability, and flexibility for both hobbyists and industrial workshops.

**Run 3-Phase Motors on a Single-Phase 230V Supply**

With our inverters, you can easily run a **3-phase motor from a standard single-phase 230V supply**, provided the motor is rated for 230V 3-phase operation. This opens up the possibility of using powerful 3-phase motors in environments where only single-phase power is available, without compromising on performance.

**Full Speed and Direction Control**

Our inverter solutions allow **complete control of motor speed and direction**, giving you precise operation for machining tasks. Whether you need slow, controlled cuts or rapid movement, our systems give you the flexibility to optimise your lathe's performance.

**Cost-Effective and Reliable Motors**

Unlike traditional single-phase motors, these 3-phase motors **do not require capacitors**, making them **more cost-effective and highly reliable**. Fewer components mean less maintenance and reduced risk of failure, ensuring your lathe keeps running smoothly.

**Smooth, Adjustable Ramped Starts**

Inverters provide a **fully adjustable ramped start**, which:

- Reduces start-up currents
- Minimises mechanical stress on gears, pulleys, and bearings
- Extends the life of your lathe's moving parts

This feature makes the start-up process much gentler on your machinery, giving you peace of mind and longer-lasting performance.

**Why Choose Us?**

- Expert support in selecting the right motor and inverter combination
- High-quality motors and inverters suitable for lathes and other machining equipment
- Reliable, cost-effective solutions for both industrial and hobbyist applications



**Contact Us**

**The Motor Control Warehouse**  
Unit 43, Mochdre Industrial Estate  
Newtown, Powys  
SY16 4LE, UK

T: 01686 688948  
E: [enquiries@motorcontrolwarehouse.co.uk](mailto:enquiries@motorcontrolwarehouse.co.uk) ↗  
W: [www.motorcontrolwarehouse.co.uk](http://www.motorcontrolwarehouse.co.uk) ↗

## **Items For Sale**

### **Disclaimer**

The club is not responsible for any item appearing on these pages. The buyer and seller must make their own arrangements as to the condition, suitability, delivery, payment and price etc.

# NORTH WARWICKSHIRE & HINCKLEY

## CLUB EVENTS 2026

Jan	6th	Hands-On	
	20th	Demo - Rob Sheehan	Off-Centre Candlestick
Feb	3rd	Hands-On	
	17th	Demo	John Evans
March	3rd	Hands-On	
	17th	Demo	Terry Bray
April	7th	Hands-On	Preparation for Daventry
	21st	Hands-On	Preparation for Daventry
	26th	AWGB AGM	
May	1st-2nd	Woodworks at Daventry	
	5th	Demo	Emma Cook
	19th	Hands-On	
August	29/30	Chestnut Woodturning Weekender	
September	1st	Demo	Tony Jones
	15th	Hands-On	
October	6th	Demo	Wolfgang Shulze-Zachau
	10/11	AWGB Festival of Woodturning	

### Events at Coombe Abbey

Sat January 10th, AGM  
Walsgrave Baptist Church