



NORTH WARWICKSHIRE & HINCKLEY WOODTURNING CLUB

NEWSLETTER October 2022

www.hinckleywoodturners.org.uk

Notes from the Editor

Inside you will find my demonstration on turning a pepper mill. You will also find the demonstration by Peter Deeming on home-made tools and jigs. I have also included some photos from the Alan Peters furniture awards held at the Axminster shop on Wednesday 14th October.

In case you want a day out, I have included some pictures from my trip to Upton House near Banbury. Upton House is a National Trust property that used to be the weekend hunting lodge for the Shell Oil billionaire Lord Bearsted. It's known for its collection of paintings by famous artists.

Next month we will hold the AGM on Tuesday 1st November followed by a hands-on session. On the 15th we have Steve Obrien leading a hands-on pyrography session while I will be showing off my laser etching machine.

I haven't decided yet if I'm going to the Harrogate show. It is being held on Friday 11th to Sunday 13th November. It's a 2 1/4 hour drive up the M1 for me. Not too bad and there is always the chance to drop into Turners Retreat on the way back.

Regards
Rob Sheehan

Pepper Mill Demonstration

By Rob Sheehan



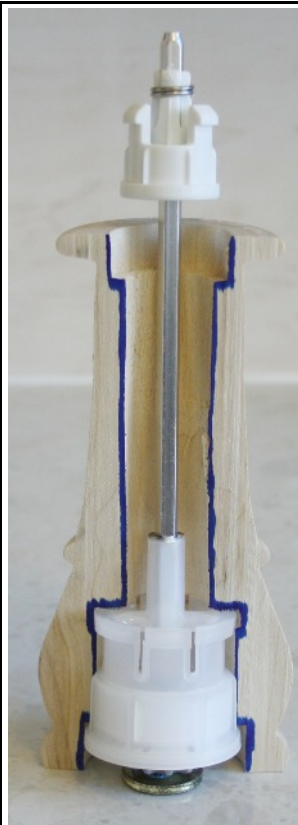
I started turning pepper mills during my time at Axminster. A quick internet search shows a variety of shapes from very traditional to quite quirky. A few of my favourites are shown at the end. They are not difficult to make as most of the work involves boring holes. The outside can be any shape you choose.

Choose your salt/pepper mill mechanism. I like the Crushgrind from Axminster. And choose your wood. Approx 3" x 3" x 12". The following instructions are for the 8" (195 mm) mill. Other sizes are available.

Turn the blank to round and put a chucking spigot on the top end. Mount in a chuck and drill a 45mm hole 19mm deep in the end. This is a clearance hole for the mechanism.

Drill a 38mm hole 24mm deep. This is to take the mechanism. I mark the shaft of my drill bit. Make a 5mm wide by 5mm deep recess at the bottom sides of this hole. This is to take the locking wings of the mechanism. Buy a special tool from Crown or Robert Sorby or make your own.

Drill a 25mm hole about 100mm deep. This is the salt or pepper reservoir. You will later drill from the other end to meet this hole to complete the reservoir.



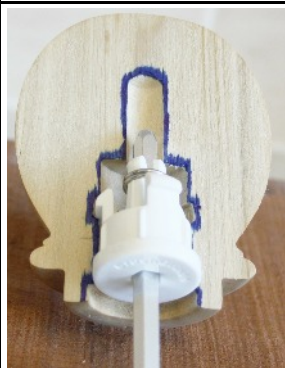
Sand, seal and apply your choice of finish to the end. Then part off 170mm from the end





Hold the open end of the base on pin jaws or make a jam chuck to fit the open end. Drill a 38mm hole 15mm deep in the end. Drill a 25mm hole to meet the hole drilled from the other end.

Turn the outside to any shape of your choice. I like to put two beads at the base and one bead at the top. The base is quite wide at 65mm curving to about 48mm wide at the top. Sand, seal and finish the outside. I leave the inside bare wood. Any finish on the inside must be food safe.

Mount the top in a chuck and drill a 26mm hole 5mm deep in the end. This is a clearance hole for the top part of the mechanism.

Drill a 22mm hole 19mm deep. This is to take the mechanism. Cut a 5mm deep by 5mm wide recess at the bottom of the 22mm hole. This is to take the locking wings of the mechanism. Drill a 10mm hole 15mm deep. This is to take the pepper mill shaft that protrudes through the top mechanism.



<p>Cut a 38mm spigot 10mm deep at the end to fit into the 38mm recess on the base. Turn a bead to match the single bead at the top of the base. Shape the rest of the top into a ball. Sand seal and finish. Hold the top on a jam chuck to finish off the top.</p>	
<p>Assembly of the Top Place a paper/cloth pad on the chuck to prevent marking. Hold the top against the chuck and use the tailstock barrel to push the mechanism into the top's recess until it is flush.</p>	
<p>Assembly of the Base Turn a wooden donut 40 mm diameter 10mm thick with a 22mm internal hole. This fits against the base of the mechanism without pressing on the central mechanism grind adjust button.</p>	
<p>Place a paper/cloth pad on the chuck and lightly grip the top of the pepper mill base. Place the wooden donut against the base of the mechanism and use the tailstock barrel to push against the donut and push the mechanism into the base recess.</p>	
<p>Push the top onto the protruding stem of the mechanism. Your salt/pepper mill is complete. Fill with your choice of condiment and adjust the coarseness of the grind with the button on the bottom of the mechanism.</p>	



Four pepper mills. An omage to the Beatles Sgt Pepper album.



A selection of differently shaped pepper mills and salt shakers.



Left - Large pepper mills created using exactly the same 8" mechanism but extending the length with aluminium tube.

Right - Some ideas for pepper mills from the internet.



Home-Made Tools and Jigs

By Peter Deeming

When Peter started turning, he bought four tools. Since then he has made his own tools. Nicely turned chunky ash handles and steel from old car boot sale chisels or Chinese HSS. He then grinds them to shape and epoxys them into the handle. A copper ferrule made from 15mm or 22mm plumbing pipe finishes it off.



Knife made from an industrial hacksaw blade



Captive Ring Tool. Cutting tip is shaped to make rings of varying sizes not a fixed size like bought tools



Bradawls. Made from coat hanger steel and sanded to a point on a disc sander.



Diamond Files. Different grits attached to a handle to make them easier to use.



Bowl Depth Gauge.
Dowel pushed through
a hole in a stick. Tight
enough to hold. Could
add a locking screw if
it starts to come loose.



Push Stick. Narrow tip
allows small segments
to be pushed through a
saw.



Burning Wire. Made
from push bike brake
cable.



Decorating Elf. Henry
Taylor's at the top,
Peter's below. Dremel
cutter, 3 bearings to
match cutter stem and
a magnet to hold it in.



Skew Chisel. Looks
more like a very
leathal weapon as it's
the size of a bowl
gouge. Difficult to
master.



Carbide tipped tools.
Hexagonal shaft to set
cutter at the perfect
angle. Diamond,
round and square
cutters from China.



Branding Iron with Stand. Carved from a block of aluminium and heated with a blowtorch.



Two chuck spanners.



Quick drilling on the lathe. Various size drill bits fitted with their own handle.



Negative Rake Scrapers. Round, French curve and square ended. Made with thicker Chinese HSS.



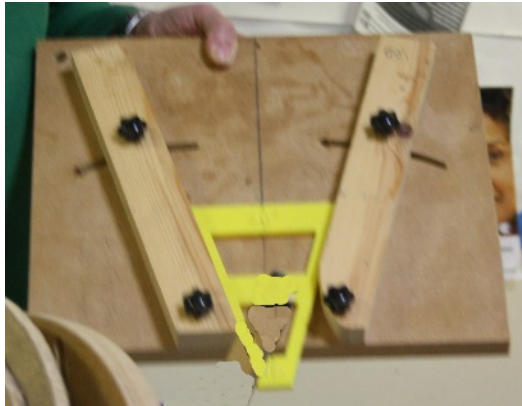
Shavings Tray. Fitted under the lathe bed to catch 80% of shavings. Side gap for quick emptying.



Segment cutting jig for bandsaw. Three different angles can be cut.



Segment cutting jig for the table saw. Variable angle set using “Seggies” (accurate plastic angle template) Google “Keith Barrow Woodturning at 54a”



Circle cutting jig for the bandsaw. Any diameter circle can be cut. Jig is marked with inch diameters. Can also cut circles at 45° allowing bowls to be made from wood planks.



Segment Press. Clamps 2 or more segment rings together while the glue dries. Narrow to take up less space - can be hung up. Place board above and below rings to take wider stock. Height adjustable and home-made threaded screw handle.



Lathe Steady. Used when turning long pieces. Holds the middle/far end where vibration can make turning difficult. Home made wheels from melted and re-formed plastic milk cartons.



Longworth Chuck. Tapered rubber buttons can be adjusted to any diameter to hold pieces for final turning or sanding e.g. removal of chucking spigot. Not a strong hold so no major turning can be done.



Other tools and jigs were also shown but not enough room to show them all.

Member's Work

The following items were on display at Peter's demonstration



Lion Carving by
Bob Heathman



Polar Bear Carving by
Bob Heathman

Leg Table by Charlie Matts



Alan Peters Award Ceremony
at Axminster, Nuneaton 14/10/22
In remembrance of a fine furniture and cabinet maker.



1st Prize



2nd Prize



3rd Prize



Highly Commended



Commended

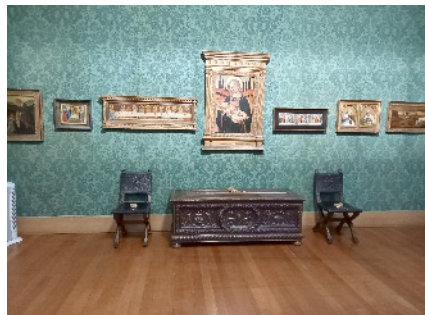


Jeremy Broun, chief judge and
Lee Stokes, deputy manager

Upton House National Trust Property near Banbury

by Rob Sheehan

Upton House was Lord Bearsted's 1930s country retreat with dramatic terraced gardens and a world-renowned art collection. His fortune was inherited from his father, a co-founder of the Shell Oil business.



NORTH WARWICKSHIRE & HINCKLEY WOODTURNING CLUB EVENTS 2022

November 1st **AGM + Hands On**
13/11 Harrogate Woodworking Show
15th Pyrography + Laser Steve Obrien + Rob Sheehan
December 6th **Christmas Party**
20th No Meeting

WOODTURNING CLUB EVENTS 2023

January 3rd Hands On

Axminster Nuneaton

Friday November 4th Trend CNC Router demo
Saturday November 5th Arbortech Power Carving demo
Saturday November 12th Coombe Abbey Woodturners

Events at Other Clubs

Please contact the club to check times/dates/locations before attending

Coombe Abbey (Walsgrave Baptist Church 10am - 4pm)
Saturday November 19th demo by Mick Hanbury